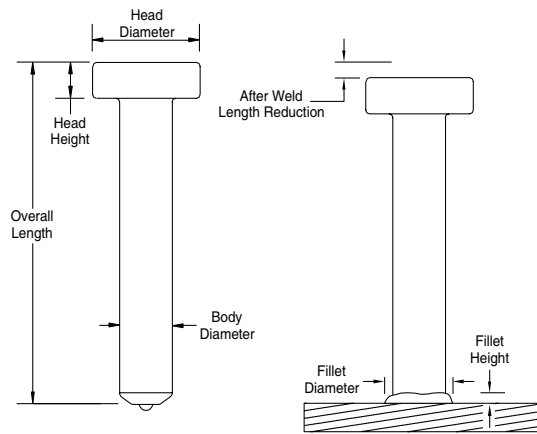


HEADED CONCRETE ANCHOR



A longer grip is usually needed when welding into angles.

Consult your Sales Representative for assistance with accessories for this type of application.

MECHANICAL PROPERTIES

	TYPE B
Tensile Strength	65,000 psi minimum
Yield Strength	51,000 psi minimum
Elongation (% in 2")	20% minimum
Elongation (% in 5x dia)	15% minimum
Reduction of Area	50% minimum

TYPE B STUDS are headed, bent, or of other configurations that are used as an essential component in composite beam design in construction.

Concrete Anchors can be made any length above the standard minimum.

WELD STUD SPECIFICATION			WELD STUD PACKAGING			WELD STUD WEIGHTS		
Bluearc P/N	Weld Base Diameter	Overall Length	Piece per Box	Box per Pallet	Pieces per Pallet	Box Weight	Pallet Weight	1,000 Piece Weight
HA50-112	1/2	1 1/8	600	27	16,200	68 lbs	1,836 lbs	112 lbs
HA50-162	1/2	1 5/8	450	27	12,150	64 lbs	1,728 lbs	138 lbs
HA50-212	1/2	2 1/8	400	27	10,800	67 lbs	1,809 lbs	166 lbs
HA50-262	1/2	2 5/8	250	27	6,750	47 lbs	1,269 lbs	198 lbs
HA50-312	1/2	3 1/8	300	36	10,800	68 lbs	2,448 lbs	223 lbs
HA50-362	1/2	3 5/8	250	36	9,000	65 lbs	2,340 lbs	259 lbs
HA50-412	1/2	4 1/8	200	36	7,200	56 lbs	2,016 lbs	277 lbs
HA50-531	1/2	5 5/16	150	36	5,400	52 lbs	1,872 lbs	339 lbs
HA50-612	1/2	6 1/8	125	36	4,500	49 lbs	1,728 lbs	388 lbs
HA50-812	1/2	8 1/8	100	36	3,600	50 lbs	1,800 lbs	495 lbs
HA50-1012	1/2	10 1/8	90	36	3,240	54 lbs	1,944 lbs	600 lbs
HA50-1212	1/2	12 1/8	50	36	1,800	38 lbs	1,368 lbs	760 lbs

Head Diameter @ 1" and Head Height @ 5/16" for all 1/2" Headed Concrete Anchors

Concrete Anchors:

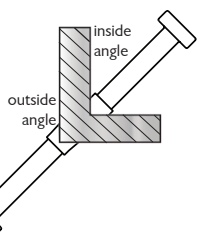
Fasteners that are unthreaded with an upset head. The typical use is for anchoring steel plates and shapes in concrete structures. Meets with AWS and all other applicable specifications. (see below)

Length:

Length listed is before weld. Stud diameters 1/2" or less, will be approximately 1/8" shorter after weld - Stud diameters 5/8" and above, will be approximately 3/16" shorter - Stud diameters 1" will be approximately 1/4" shorter after weld.

Material:

Low carbon steel, ASTM A29/A108, 1010-1020. Also available in stainless steel. Typically provided in SS302 though other grades available on request.



STANDARD ACCESSORIES

	Bare Beam	Inside Angle	Outside Angle
Chuck	CH50	CH50	CH50
Grip	GS50	GLS50	GS50
Foot	FTSS20	FTSS20	FTSS20
Ferrule	50F	50I-25 50I-37	50O

When Using Heavy Duty Ferrules Use Grip GS62 and a medium, foot FTMS20